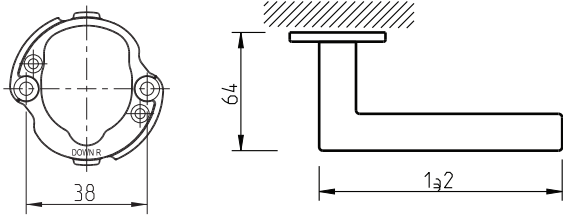
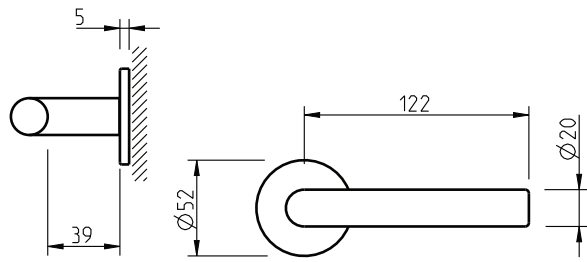










REF. 4002 RL



- 
(01)
 latão polido brilhante
 polished brass
- 
(03)
 cromado brilhante
 chrome
- 
(96)
 cromado satinado
 satin chrome
- 
(141)
 titan
 titan
- 
(142)
 niquelado pérola
 nickel pearl
- 
(152)
 branco pérola
 white pearl
- 
(153)
 preto pérola
 black pearl
- 
(158)
 purist brass
 purist brass

Descrição

Puxador par
 Adaptador com sistema Roll & Lock
 - Base metálica em Inox AISI 304
 Mola recuperadora
 Ferro quadrado de 8x90mm
Classe 4

Description

Lever set
 Mechanism with Roll & Lock system
 - Metal base in Satin stainless steel AISI 304
 Recovery spring
 8x90mm square spindle
Class 4

Matéria Prima

Latão CW617N

Raw Materia

Brass CW617N

Aplicação

Portas interiores com 30mm - 45mm espessura

Application

Interior doors with 30mm - 45mm thick